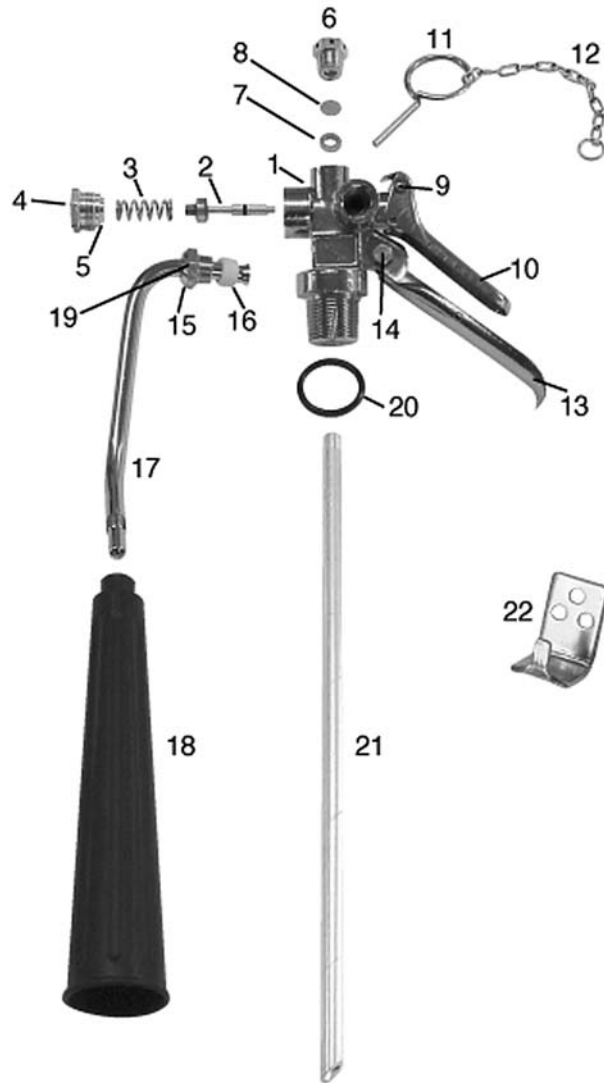




**Strike First
Corporation
of America**

PARTS for Fire Extinguishers CO₂

Valve Assembly Parts for CO₂ 5 lb.



PARTS for CO₂ Fire Extinguisher

Model. #	Part Name	Models Used On	✓
Valve Assembly Parts for 5 lb. CO₂			
SF-3115-A1	Valve Body Assembly (1) <i>includes all parts: 2 through 14 and #20</i>	5 lb. CO ₂	
SF-31132	Stem Assembly (2)	5 lb. CO ₂	
SF-31142	Spring (3)	5 lb. CO ₂	
SF-31143	Spring Retainer Nut (4) <i>includes Washer (5)</i>	5 lb. CO ₂	
SF-31145	Safety Cap Assembly (6) <i>includes Washer (7) and Disk (8)</i>	5 lb. CO ₂	
SF-31138	Top Lever Rivet (9) <i>Stainless Steel</i>	5 lb. CO ₂	
SF-31152	Top Lever (10) <i>Stainless Steel</i>	5 lb. CO ₂	
SF-31153	Pull Pin (11) <i>Stainless Steel</i>	5 lb. CO ₂	
SF-31135	Chain (12) <i>Stainless Steel</i>	5 lb. CO ₂	
SF-31148	Carry Handle (13) <i>Stainless Steel</i>	5 lb. CO ₂	
SF-31148	Carry Handle Nut and Bolt (14) <i>Stainless Steel</i>	5 lb. CO ₂	
SF-31131	Swivel Tube Assembly (15, 16 and 17) <i>includes O-Ring Swivel Tube (19)</i>	5 lb. CO ₂	
SF-11309	Horn (18)	5 lb. CO ₂	
SF-20917	O-Ring Valve Body (20)	5 lb. CO ₂	
SF-5-ST	Syphon Tube (21)	5 lb. CO ₂	
SF-5-WH	Wall Hook (22)	5 lb. CO ₂	