



Strike First Installation Instructions

APEX Fire Extinguisher Cabinet Instructions

#1 ROUGH OPENINGS - HEIGHT & WIDTH

- A. SF's Apex Series Cabinets installed in Metal Stud Wall System: Rough openings using metal studs should be 1/4" larger than the outside dimension of the cabinet tub.
- B. Apex Cabinets Installed in Wood Stud Wall Systems: Rough openings using double wood stud construction on all four sides of the cabinet tub unit should be 1/4" larger than the outside dimension of tub unit.
Caution: Should a load-bearing stud be cut to install the cabinet, ensure that a load header be reinstalled.
- C. Rough openings must not be less than manufacturer's recommended dimensions.

#2 DETERMINE CENTER LOCATION OF STUD

#3 DRILLING HOLES

Drill 3/16" holes every 10" through double-sided wall construction and ends of cabinet, making sure to stay in center of the studs.

#4 CABINET PLACEMENT

Cabinet in framed opening must be centered and leveled top to bottom and side to side.

SAFEGUARD Fire-Rated Valve and Hose Cabinet Instructions

SEE NEXT PAGE FOR FIRE-RATED EXTINGUISHER CABINET INSTRUCTIONS AND DRAWINGS

#1 ROUGH OPENINGS - HEIGHT & WIDTH

- A. SF's Fire-Rated Cabinets Installed in Metal Stud Wall Systems: Rough openings using metal studs should be 1/4" larger than the outside dimension of the cabinet tub unit.
- B. SF's Fire-Rated Cabinets Installed in Wood Stud Wall Systems: Rough openings using double wood stud construction on all four sides of the cabinet tub unit should be 1/4" larger than the outside dimension of tub unit.
Caution: Should a load bearing stud be cut to install the cabinet, ensure that a load bearing header be reinstalled.
- C. Rough openings must not be less than manufacturer's recommended dimensions.

#2 DETERMINE CENTER LOCATION OF STUD

#3 DRILLING HOLES

Drill 3/16" holes every 10" through double sided wall construction and ends of cabinet, making sure to stay in center of the studs.

#4 FIND THE EXACT LOCATION OF THE PIPE(S) WHICH ENTER(S) THE CABINET AND MARK THE CABINET TUB APPROPRIATELY.

#5 FOLLOW THESE STEPS EXACTLY FOR DRILLING OF HOLE FOR THE PIPE(S) WITH A HOLE SAW:

- A. Both outside and inside tubs and insulation material must be completely open to receive pipe(s).
- B. The clearance between the outside dimension of the pipe(s) and the outside dimension of the hole in the tub must be 1/16" or less at all points.

#6 CABINET PLACEMENT

Cabinet in framed opening must be centered and leveled top to bottom and side to side.

#7 SECURING CABINET

The #10 x 3" hex self tapping screws provided by SF must be used to secure the cabinet.

Caution: Failure to use SF provided screws can void fire-rated listing.

#8 COMPLETION OF INSTALLATION

After the cabinet is secured with SF's screws, the pipe must be caulked using a latex based fire barrier product with at least a two hour rating (recommended products must be passed by ASTM, FM & UL testing standards for a three hour fire penetration seal for walls and floors).

SAFEGUARD Fire-Rated Extinguisher Cabinet Instructions

SEE REVERSE FOR FIRE-RATED VALVE AND HOSE CABINET INSTRUCTIONS

#1 ROUGH OPENINGS - HEIGHT & WIDTH

A. SF's Fire-Rated Cabinets Installed in Metal Stud Wall Systems: Rough openings using metal studs should be 1/4" larger than the outside dimension of the cabinet tub unit.

B. SF's Fire-Rated Cabinets Installed in Wood Stud Wall Systems: Rough openings using double wood stud construction on all four sides of the cabinet tub unit should be 1/4" larger than the outside dimension of tub unit.

Caution: Should a load bearing stud be cut to install the cabinet, ensure that a load bearing header be reinstalled.

C. Rough openings must not be less than manufacturer's recommended dimensions.

#2 DETERMINE CENTER LOCATION OF STUD

#3 DRILLING HOLES

Drill 3/16" holes every 10" through double sided wall construction and ends of cabinet, making sure to stay in center of the studs.

#4 CABINET PLACEMENT

Cabinet in framed opening must be centered and leveled top to bottom and side to side.

#5 SECURING CABINET

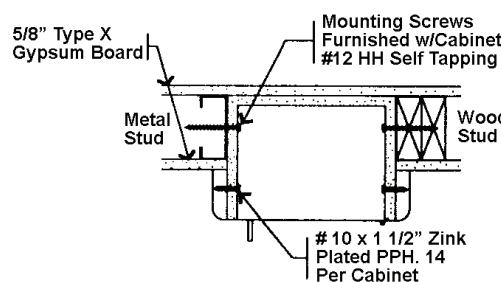
The #10 x 3" hex self tapping screws provided by SF must be used to secure the cabinet.

Caution: Failure to use SF provided screws can void fire-rated listing.

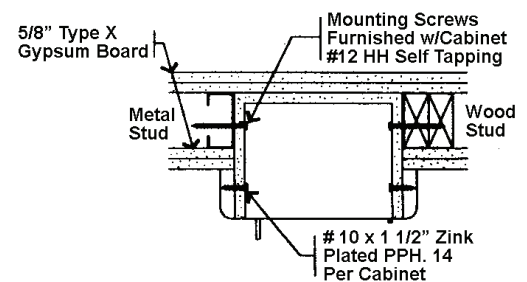
SAFEGUARD

Typical Semi-Recessed Fire Rated Installation

ONE HOUR FIRE WALL SYSTEM



TWO HOUR FIRE WALL SYSTEM



WARNOCK HERSEY
UL Classified
5/8" Type X
gypsum board inserted in the cavity between the two layers. Warnock Hersey has approved the Safeguard Cabinets to be mounted in any face of fire rated steel or wood stud for up to 2 hour rated walls without affecting its fire rating. The above meets the requirement test ASTM-E119-98 with test report WHI-495-1534. MOUNTING INSTRUCTIONS are supplied with each safeguard cabinet.